



2017 Signature Member Show

MARCH 9TH - JUNE 3RD, 2017
FIFTH STREET SCHOOL
401 S.4th Street Las Vegas, NV 89101



BEST OF SHOW
"Going With the Flow"
by Barbara Stanton

A Special Thanks to:
Barbara Yoerg Foundation
Jack Richeson Company, Inc.
M. Graham Paints
Salis International

JUROR: JOYCE KASPRZYK

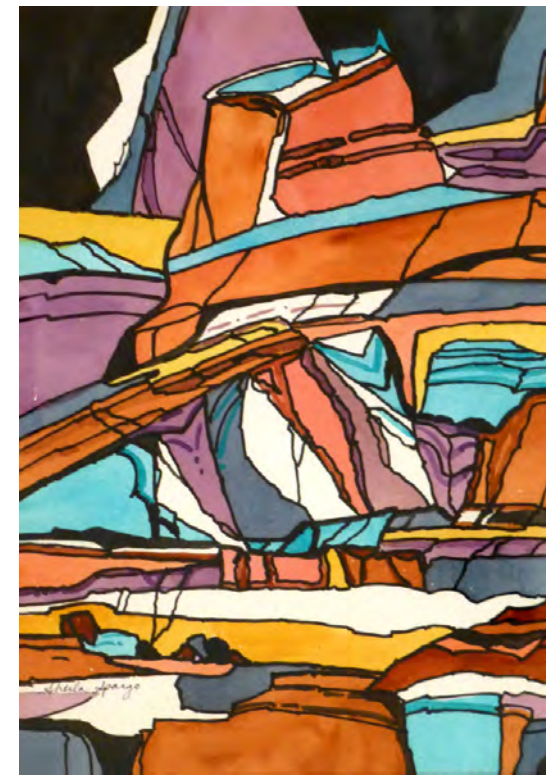


FIRST PLACE
"Poppin' Out" by Doni Murphy



SECOND PLACE
"Conversation"
by Myra Oberman

THIRD PLACE
"Road Less Traveled"
by Renee Clark



CREATIVE AWARD
"Canyon Colors" by Sheila Spargo

3 HONORABLE MENTIONS

"Rose Garden"
by Wanda Drake



"Rear Blossom"
by Maria Frank



"Colors of Fall"
by Patty Stroupe



EXHIBITION PARTICIPANTS

Burg, Gwen	A Four-Sided Story	NFS
Burg, Gwen	Stepping Forward	NFS
Burg, Gwen	The South of France	NFS
Champlin, Jim	Ubiquity	\$300
Champlin, Jim	West Kansas	\$250
Champlin, Jim	Midnight Mass	\$200
Churchill, Sue Anne	Signs of the Times	\$125
Clark, Renee	Chorus of Orchids	\$200
Clark, Renee	Road Less Traveled	\$200
Clark, Renee	Icicles	\$200
Drake, Wanda	Rose Garden	\$175
Drake, Wanda	By the Sea	\$225
Frank, Maria	Rear Blossom	\$350
Hoag, Edwin	Who Are You?	\$400
Montoure, Gail	Play Ball	\$275
Murphy, Doni	Poppin' Out	\$200
Neiry, Susan	Peace in the Valley	\$225
Neiry, Susan	Rainbow Garden	\$275
Oberman, Myra	Conversation	NFS
Oberman, Myra	Leisure Time	NFS
Oberman, Myra	Mind Your Own Business	\$350
Roach, Sue	Desert Miracle	\$250
Roach, Sue	Fins	\$100
Roach, Sue	Purple Prickly Pear	\$200
Rossi, Sheryl	Aunt Lucille	\$200
Rossi, Sheryl	Ohio Farm	\$200
Rossi, Sheryl	Charlie	NFS
Shaw, Mary	Love It --- But	\$150
Shaw, Mary	Solitude	\$100
Spargo, Sheila	Kachina	\$300
Spargo, Sheila	Canyon Colors	\$150
Stanton, Barbara	Going With The Flow	\$225
Stanton, Barbara	Circles Squared	\$195
Stroecker, Linda	Found in Rhyolite	\$125
Stroupe, Patty	Adam's Fall	\$200
Stroupe, Patty	Monument Valley	\$200
Stroupe, Patty	Colors of Fall	\$200
Sudweeks, Margaret	Winter Scene	\$250
Vovsi, Mary	Waiting for Breakfast	\$175
Vovsi, Mary	It's a Jungle Out There	\$250

For purchase information, please contact
Gail Montoure @ 702-617-1390